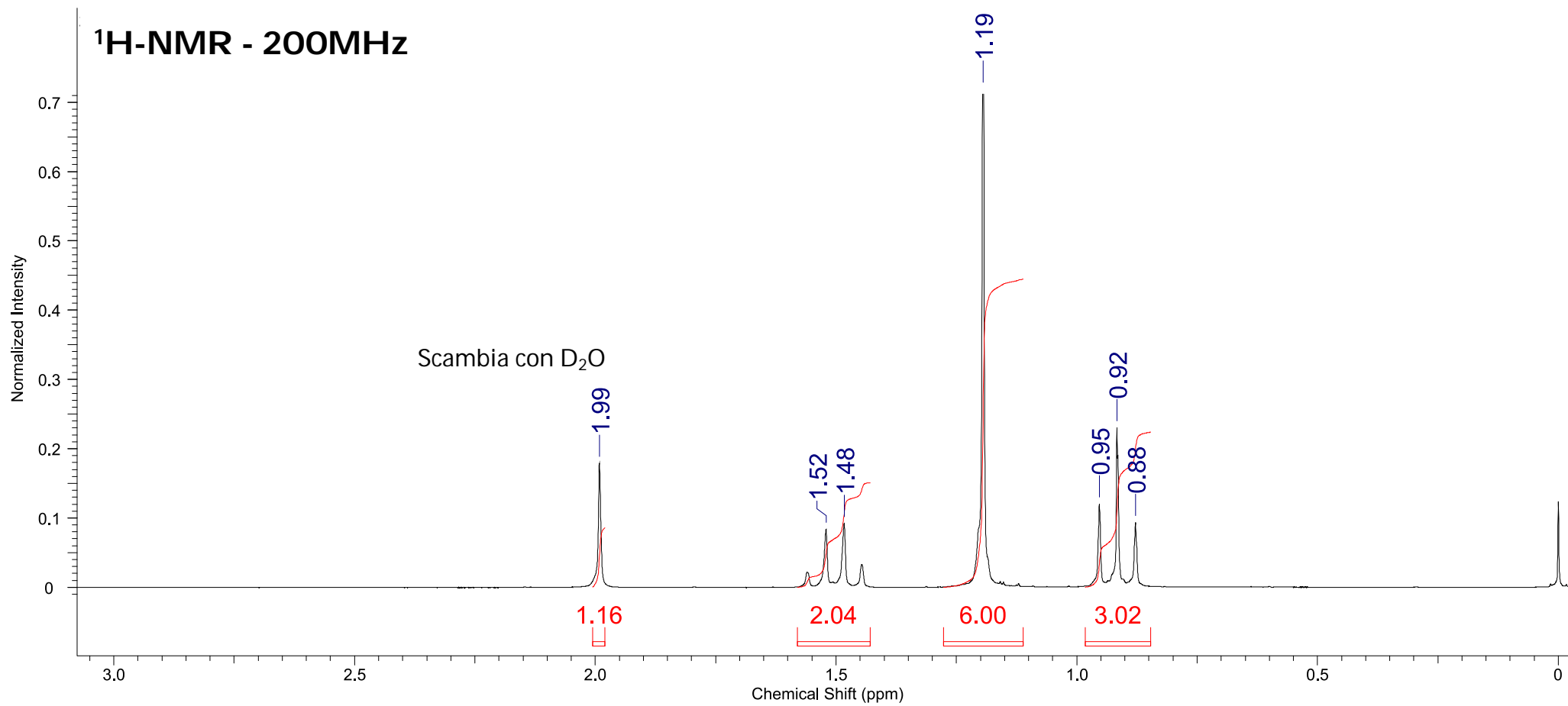


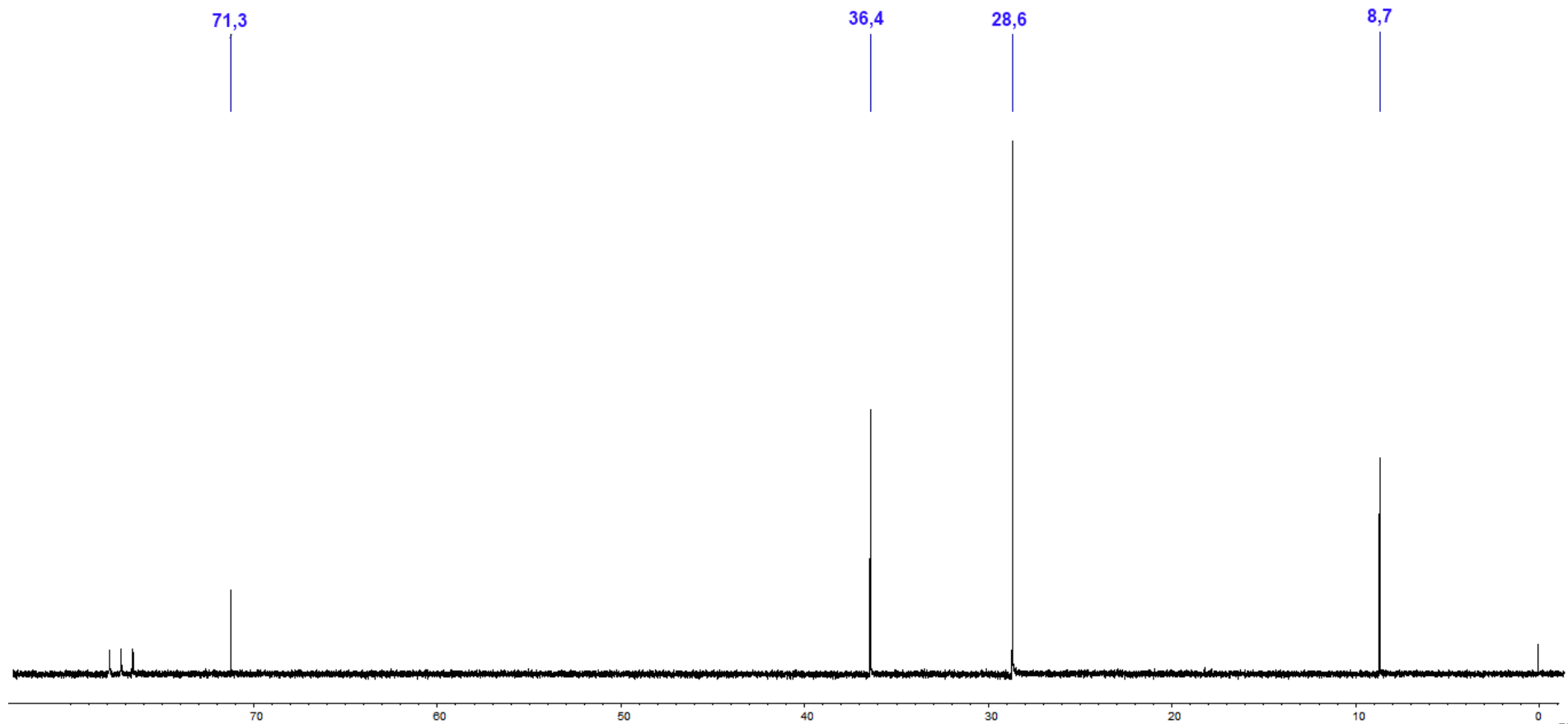
Esercizio 2

$^1\text{H-NMR}$ - 200MHz



No.	(ppm)
1	0.88
2	0.92
3	0.95
4	1.19
5	1.48
6	1.52
7	1.99

¹³C-NMR - 50MHz



P.M. 88,15 g/mol

Analisi Elementare

C 68 %

H 13,7 %

IR

